

Intr.

7.

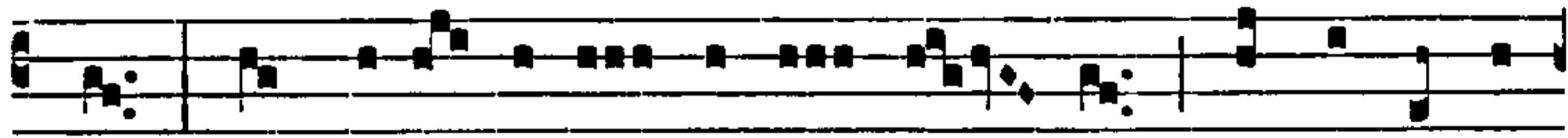
P



U-er * ná-tus est nó- bis, et fí- li- us dá-tus est



nó- bis : cú-jus impé- ri- um super hú- me- rum é-



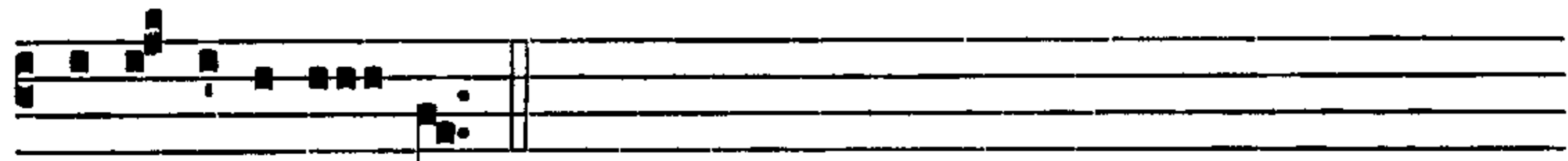
jus : et vocá- bi- tur nó- men é- jus, mágni consí-



li- i Ange- lus. *Ps.* Can- tá- te Dómino cánti- cum nó-



vum : * qui- a mi- rabí- li- a fé- cit. Gló- ri- a Pátri.



E u o u a e.