

Intr.

5.

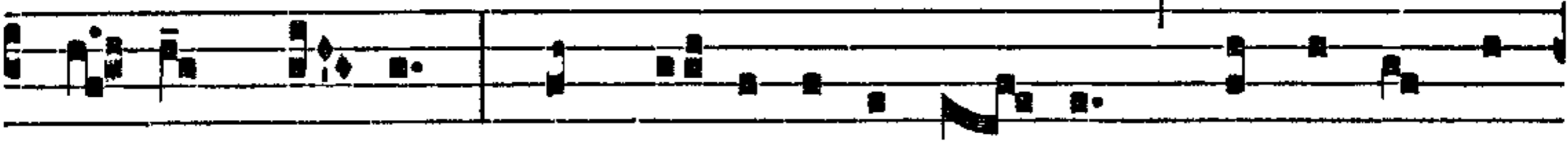
**E**



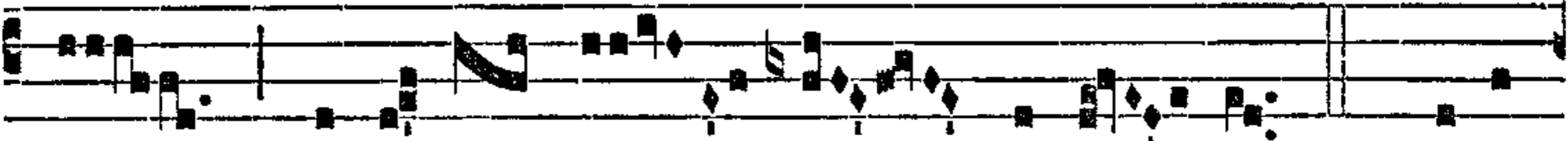
Cce Dé- us \* ádju-vat me, et Dó-mi-nus sus-



céptor est ánimae mé- ae : avérte má- la in-i-



mí- cis mé- is, in ve- ri-tá-te tú- a dispérde íl-



los, pro-téctor mé- us Dómi- ne. *Ps.* Dé-us



in nómine tú-o sálvum me fac : \* et in virtú-te tú-a jú-



dica me. Gló-ri-a Pátri. E u o u a e.