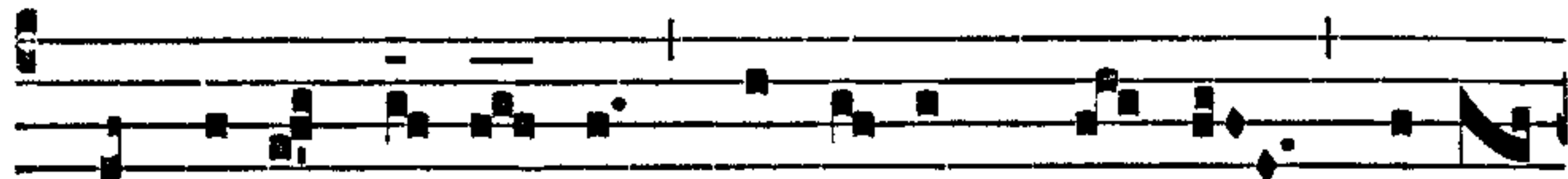


Intr.

6.

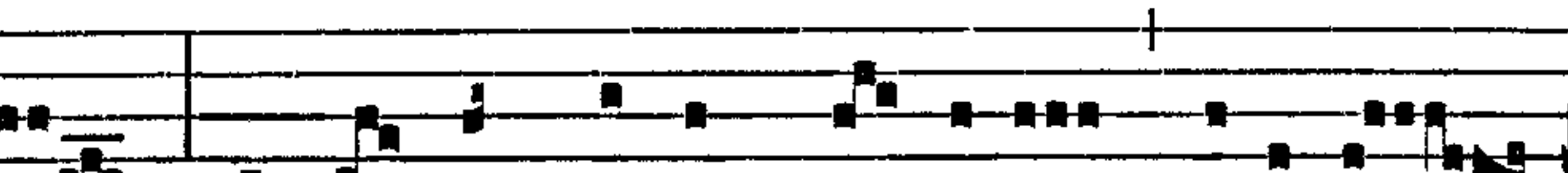
C



Antáte Dómi- no * cánti-cum nó- vum, alle-



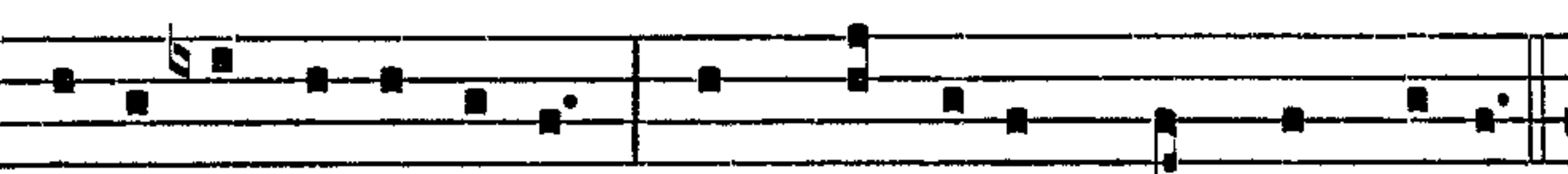
lú- ia : qui- a mi-ra-bí- li- a fé-cit Dómi- nus, alle-



lú-ia : ante conspéctum gén-ti-um reve-la-



vit justí- ti- am sú- am, alle-lú- ia, alle- lú- ia. *Ps.* Sal-



vá- vit sí- bi déxte- ra é- jus : * et bráchi- um sánctum é- jus.



Gló-ri- a Pátri. E u o u a e.